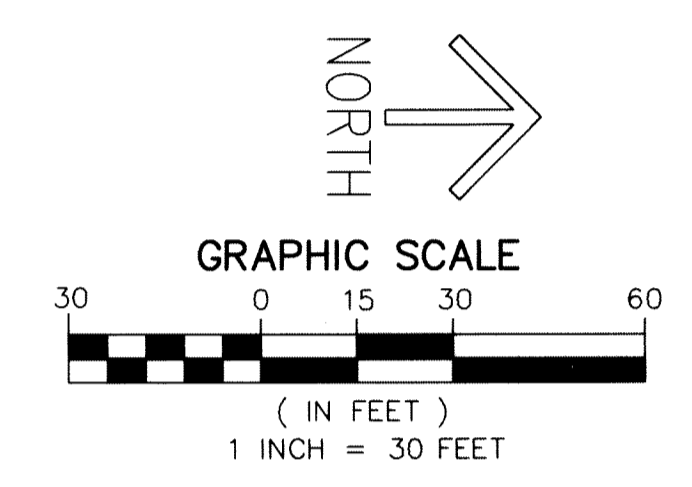
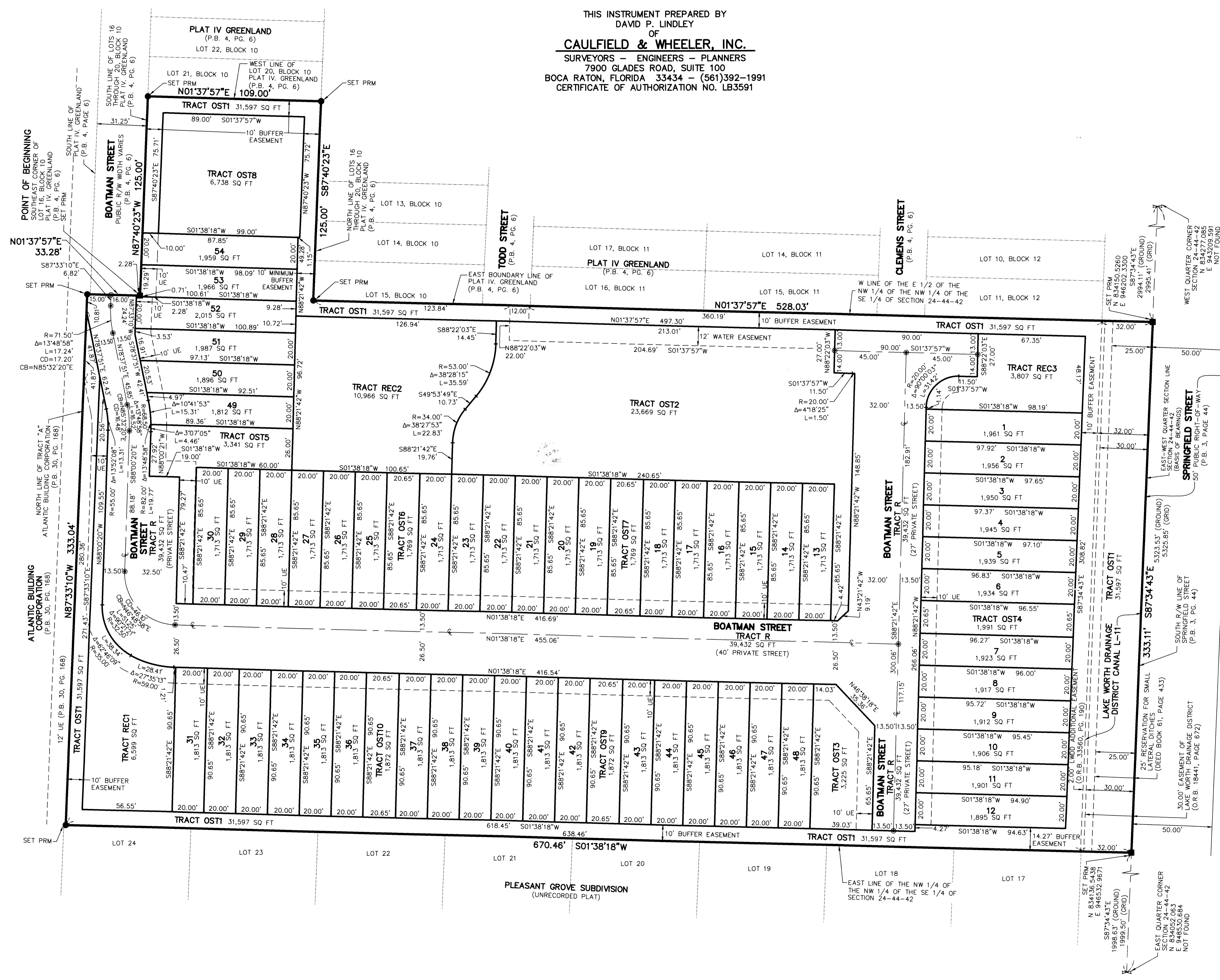


# BOATMAN HAMMOCK

BEING A REPLAT OF LOTS 16, 17, 18, 19 AND 20 OF BLOCK 10, PLAT IV. GREENLAND, AS RECORDED IN PLAT BOOK 4, PAGE 6 OF THE PUBLIC RECORDS OF PALM BEACH COUNTY, FLORIDA, TOGETHER WITH THE E 1/2 OF THE NORTHWEST 1/4 OF THE NORTHWEST 1/4 OF THE SOUTHWEST 1/4 OF SECTION 24, TOWNSHIP 44 SOUTH, RANGE 42 EAST OF THE VILLAGE OF PALM SPRINGS, PALM BEACH COUNTY, FLORIDA.

THIS INSTRUMENT PREPARED BY  
DAVID P. LINDLEY  
OF  
**CAULFIELD & WHEELER, INC.**  
SURVEYORS - ENGINEERS - PLANNERS  
7900 GLADES ROAD, SUITE 100  
BOCA RATON, FLORIDA 33434 - (561)392-1991  
CERTIFICATE OF AUTHORIZATION NO. LB3591

116  
SHEET 2 OF 2



**NOTES**  
**COORDINATES, BEARINGS AND DISTANCES**  
COORDINATES SHOWN ARE GRID  
DATUM = NAD 83 (1990 ADJUSTMENT)  
ZONE = FLORIDA EAST  
LINEAR UNIT = US SURVEY FEET  
COORDINATE SYSTEM 1983 STATE PLANE  
TRANSVERSE MERCATOR PROJECTION  
ALL DISTANCES ARE GROUND, UNLESS OTHERWISE NOTED  
SCALE FACTOR = 1.000435193  
GROUND DISTANCE X SCALE FACTOR = GRID DISTANCE  
BEARINGS AS SHOWN HEREON ARE GRID DATUM  
NAD 83 (1990 ADJUSTMENT), FLORIDA EAST ZONE.

**LEGEND/ABBREVIATIONS:**  
P.B. - PLAT BOOK  
O.R.B. - OFFICIAL RECORD BOOK  
PG(S) - PAGE(S)  
N - NORTHING (WHEN USED WITH COORDINATES)  
E - EASTING (WHEN USED WITH COORDINATES)  
R - RADIUS  
Δ - DELTA (CENTRAL ANGLE)  
CB - CHORD BEARING  
CD - CHORD DISTANCE  
L - ARC LENGTH  
UE - UTILITY EASEMENT  
DE - DRAINAGE EASEMENT  
LWDD - LAKE WORTH DRAINAGE DISTRICT  
C - CENTERLINE  
SQ FT - SQUARE FEET  
R/W - RIGHT-OF-WAY  
NAD - NORTH AMERICAN DATUM  
24-44-42 - SECTION 24, TOWNSHIP 44 SOUTH, RANGE 42 EAST  
● - SET PERMANENT CONTROL POINT  
NAIL AND DISK STAMPED  
"C&W LB 3591"  
● - SET PERMANENT REFERENCE MONUMENT  
5/8" IRON ROD WITH CAP  
STAMPED "C&W LB 3591"  
■ - SET PERMANENT REFERENCE MONUMENT  
4" x 4" x 24" CONCRETE MONUMENT  
WITH DISK STAMPED "PRM LB 3591"  
⊙ - DENOTES QUARTER SECTION CORNER